

BravoWin 10K • EliteWin 11K

2-in-1 Mini Laptop-Tablet

WT19803W87DK • WT19813W87DK



Windows 10



Bluetooth®



How to Connect Your HDMI Device to Your TV



It's important to read this user manual prior to using your new product for the first time.

IMPORTANT SAFETY INSTRUCTIONS

Electrical Device Warning

- Do not use the tablet in the environment at too high or too low temperature, never expose the tablet under strong sunshine or too wet environment. The suitable temperature for the tablet and accessories is 0°C-40°C.
- The AC adapter and apparatus shall not be exposed to dripping or splashing and no objects filled with liquids, such as vases, shall be placed on the apparatus.
- Do not pinch, bend, or put heavy or sharp objects on its electrical cord.
- Do not attempt to disassemble the cabinet. This device does not contain customer serviceable components. Refer servicing to qualified personnel.
- No naked flame sources such as lighted candles should be placed on the device.
- Unplug from the wall outlet during a storm.
- Always leave sufficient space around the device for ventilation. Do not use or place the device on soft surface such as a bed or cushion which could make the device build up heat.
- Do not handle the device roughly or subject it to falls, pressure, shock, or violent movement.
- Do not use the device while driving a car or doing any other activities in which loss of concentration could lead to potential harm to self or others.
- Due to the used enclosure material, the tablet shall only be connected to a USB interface of version 2.0 or higher. The connection to so called power USB is prohibited.
- The adapter shall be installed near the equipment and shall be easily accessible.
- When charging, please place the tablet in an environment that has a normal room temperature and good ventilation. It is recommended to charge the tablet in an environment with a temperature that ranges from 5°C~25°C. Please ensure to use only the charger offered by the manufacturer. Using unauthorized charger may cause danger and violate the authorization of the tablet and the guarantee article. The maximum operating ambient temperature of the equipment declared by the manufacturer is 40°C.
- Excessive sound pressure from earphones and headphones can cause hearing loss.

SAR statement

The SAR limit of Europe is 2.0 W/kg. Tablet has also been tested against this SAR limit. The highest SAR value reported under this standard during product certification for use at the body is 1.506 W/kg. This device was tested for typical body-worn operations with the back of the handset kept 0 cm from the body. To maintain compliance with RF exposure requirements, use accessories that maintain a 0cm separation distance between the user's body and the back of the handset. The use of belt clips, holsters and similar accessories should not contain metallic components in its assembly. The use of accessories that do not satisfy these requirements may not comply with RF exposure requirements, and should be avoided.

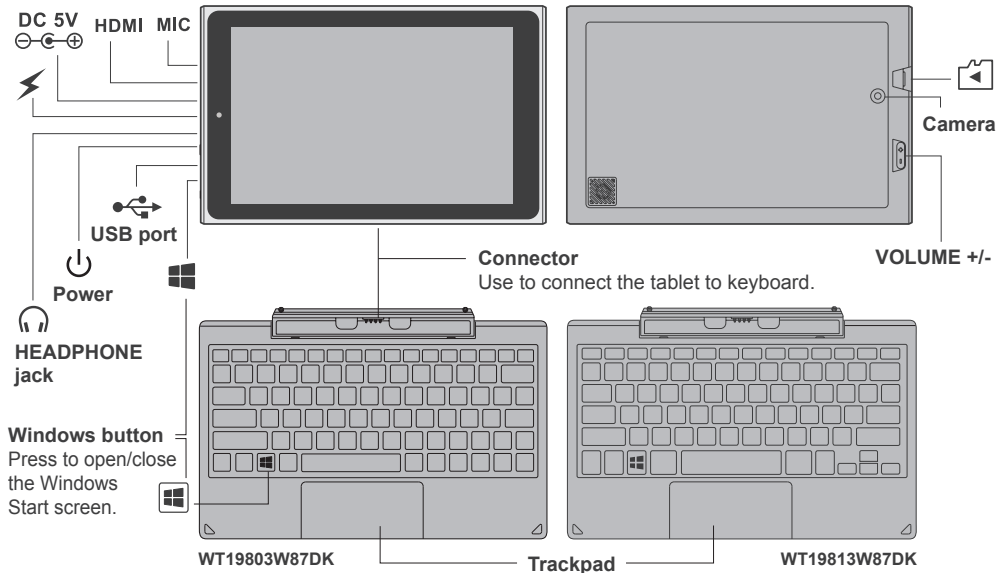
CAUTION: RISK OF EXPLOSION IF BATTERY IS REPLACED BY AN INCORRECT TYPE. DISPOSE OF USED BATTERIES ACCORDING TO THE INSTRUCTIONS.

ACCESSORY

The following accessory is included.

AC Adapter x1

GETTING TO KNOW YOUR TABLET



Refer to section **Using the trackpad** for more details.

BASIC OPERATION

Turning on your tablet for the first time




IMPORTANT! Please Read.

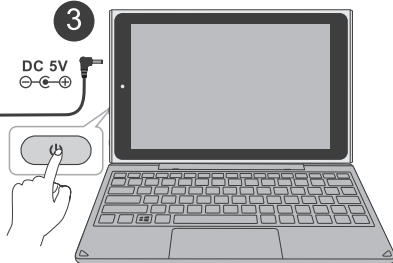
We recommend fully charging your tablet before using it for the first time. For optimal operation, please connect the provided AC adapter to your tablet once the battery reaches 20% charge.

1 Be sure your home Wi-Fi network is turned on and connected to the internet.

2 To wall outlet

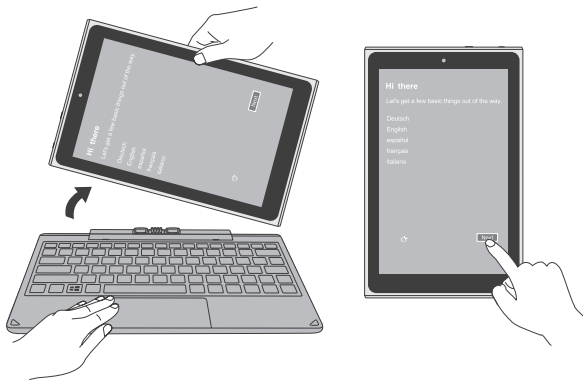


4 **Press and hold the Power**  **button 3 seconds** to turn on the unit.



Note

- You cannot switch on the unit if the battery level is less than 5%. Please charge the unit for more than 20 minutes then switch on the unit.
- The tablet battery requires about 4 hours to fully charge.

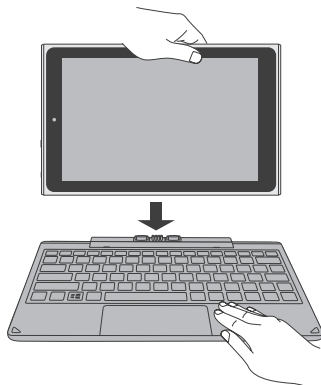


Tablet docking

The keyboard connects to the tablet via the Connector. When the connection is successful:

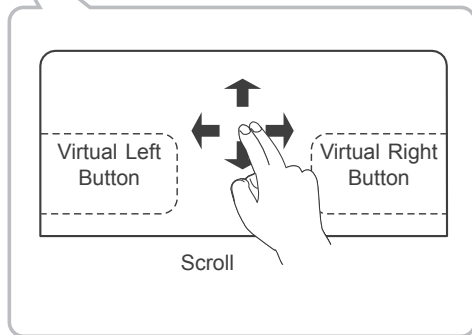
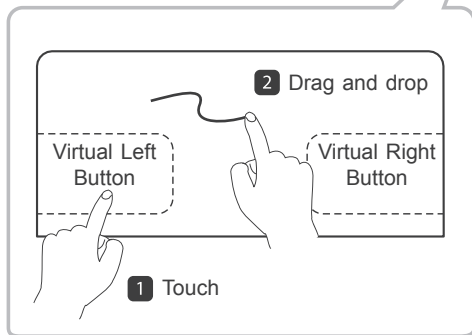
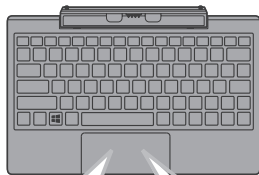
- If the tablet is in PC mode, it will automatically adjust its settings to use the keyboard.
- If the tablet is in Tablet mode, the message box "Do you want to exit tablet mode?" will display on the bottom of the screen. Choose "Yes" or "No" to proceed.

- 5 If the screen orientation changes to portrait format, please undock your tablet from the keyboard.
- 6 Select the language and region, then tap **Next** and follow the onscreen instructions to setup the tablet.




Using the trackpad

Pressure-sensing trackpad responds to a tap or light pressure
Supports basic and advanced gestures




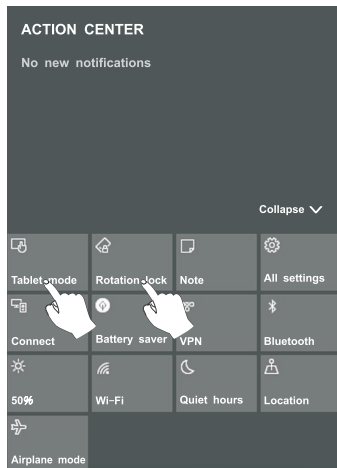
To lock / unlock the screen rotation

1. Swipe in from the right edge of the screen or tap the  icon in the lower-right corner of the screen to launch the Action Center screen.
2. Tap **Rotation lock** to turn it on/off.

Note: If the **Rotation lock** can not be set, please undock the Keyboard or remove any other accessories via the USB connection.

To switch Tablet mode on/off


1. Swipe in from the right edge of the screen or tap the  icon in the lower-right corner of the screen to launch the Action Center screen.
2. Tap **Tablet mode** to turn it on/off.



Connecting to a Wi-Fi Network

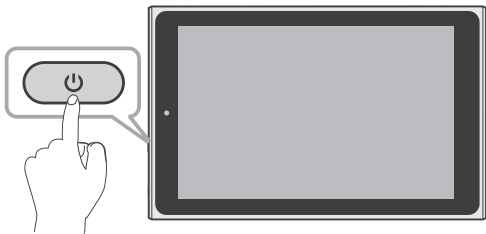
1. Go to **Settings** -> **Network & Internet** -> **Wi-Fi**, slide it to the **On** position.
2. The device will scan Wi-Fi networks automatically and display those available.
3. Select an access point from the list of available Wi-Fi connections, then tap **Connect**.
4. When you are prompted for a password, enter your password and tap **Next**.

- If the device finds a network that you connected to previously, it will connect to it automatically.
- If the Wi-Fi network does not appear in the list, it maybe a hidden network, please tap "Hidden Network" and input SSID name of network along with password for a connection.

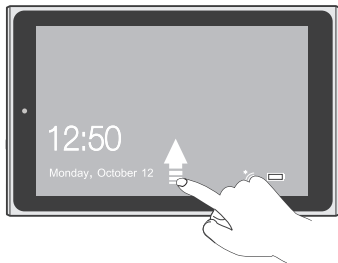
Tip: You can touch and hold the  **Wi-Fi** icon in Action Center screen until the **Go to Settings** appears and then tap it to enter the Wi-Fi setting screen.

Turn on the tablet screen from standby mode

- 1 Press the **Power**  button to turn on the tablet screen.





- 2 Swipe up the lock screen from the bottom edge of the display.

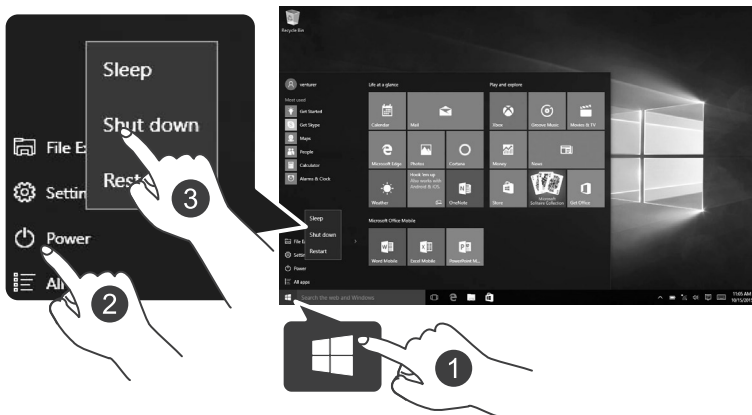


Sleep / Standby mode

Press the **Power**  button to turn off the tablet screen.

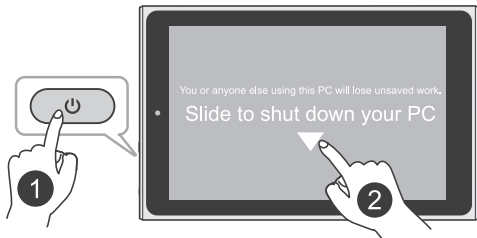
POWER OFF YOUR TABLET

- 1 Tap  on the screen or on your keyboard.
- 2 Tap  **Power**, it will display 3 options (Sleep, Shut down and Restart).
- 3 Select **Shut down** to power the tablet off.



OR

- 1 Press and hold the **Power** button until ▼ with the message "Slide to shut down your PC" appears.
- 2 Slide ▼ down. Your PC is now shut down.



Note

- When the lid is closed, the unit does not change to standby or sleep mode.
- Press & hold the Power button for 10 seconds to force SHUT DOWN the unit.

TROUBLE SHOOTING

The device won't start

- This may happen if your battery is empty. Please connect the provided AC adapter to a wall outlet.

Windows is not active automatically

Windows will be active automatically once you connect your tablet to a Wi-Fi network.

- Make sure that you have a Wi-Fi network connection.

Tablet displays network or service error message

- When you are located in places with poor signal, your tablet may lose its Wi-Fi connection. Try moving closer to the Wi-Fi router.

Touch screen response is slow or incorrect

If the tablet's touch screen response is incorrect, please try the following:

- Remove any protective film on the touch screen. The protective film may prevent the device recognition input.
- Make sure that your fingers are dry and clean before you tap the touch screen.
- Restart the tablet to clear any temporary software bugs.

Tablet is frozen or a serious error appears

- If the tablet is frozen or slow to respond, press and hold the power button for 10 seconds to force SHUT DOWN the unit, then press the power button to turn on your tablet again.

Specifications

Power: DC IN 5V (operate with AC adapter)

Card Reader: MicroSD Card Slot support max 64GB

Interface: USB 2.0 High speed

WiFi Connection: IEEE 802.11 b/g/n

LEGAL AND SAFETY NOTICES

Environmental Considerations

The crossed-out garbage can symbol on your product signifies that it falls into the category of electric/electronic equipment. Products of this type contain substances that are potentially dangerous to the environment and to human health. Therefore, you should not dispose of the Venturer electronic device in a regular trash. As such, the current European directives ask that this device be collected:

- At places of distribution in the case of a purchase of a similar electronic product.
- At locally created disposal areas (waste disposal centers, sorted trash system, etc.)



Copyright and Trademark Notices

Intel Inside, Intel Inside logo and Atom are trademarks of Intel Corporation in the U.S. and /or other countries.

Windows and windows logo are trademarks or registered trademarks of Microsoft Corporation in the United States and/or other countries.



The terms HDMI and HDMI High-Definition Multimedia Interface, and the HDMI Logo are trademarks or registered trademarks of HDMI Licensing LLC in the United States and other countries.

About HDMI

High-Definition Multimedia Interface (HDMI) is a high-speed digital interface that can transmit uncompressed high definition video and digital multichannel audio. It delivers high quality picture and sound quality. HDMI is fully backward compatible with DVI. As required by the HDMI standard, connecting to HDMI or DVI products without HDCP (High bandwidth Digital Content Protection) will result in no Video or Audio output.

The *Bluetooth*[®] word mark and logos are registered trademarks owned by the *Bluetooth SIG* Inc. Other trademarks and trade names are those of their respective owners.

The Wi-Fi CERTIFIED Logo is a certification mark of the Wi-Fi Alliance.

All other trademark appearing herein are the property of their respective owners. Specifications subject to change without notice.



For more details of user manual,
please scan QR code

Limited Warranty

ALCO INTERNATIONAL LTD makes following limited warranty. This limited warranty extends only to the original consumer purchaser and is limited to non-commercial use of the product.

VENTURER products are warranted to be free from defects in materials or workmanship for a period of one year from the date of their original retail purchase. If the unit fails to conform this warranty, we will service the product using new or refurbished parts and products at VENTURER's sole discretion.

TECHNICAL HELP ON THE OPERATION OF THIS PRODUCT IS AVAILABLE

PLEASE CALL 03453073611

MONDAY TO FRIDAY 9AM TO 5PM

Website: www.venturer.com

Printed in China
811-V80391W021