

VENTURER

PrimePro 12 TS

2-in-1 Mini Laptop

WT19623W97SK

Quick Start Guide

It's important to read this user manual prior to using your new product for the first time.



IMPORTANT SAFETY INSTRUCTIONS

Electrical Device Warning

- Do not use the laptop in the environment at too high or too low temperature, never expose the laptop under strong sunshine or too wet environment. The suitable temperature for the laptop and accessories is 0°C-40°C.
- The AC adapter and apparatus shall not be exposed to dripping or splashing and no objects filled with liquids, such as vases, shall be placed on the apparatus.
- Do not pinch, bend, or put heavy or sharp objects on its electrical cord.
- Do not attempt to disassemble the cabinet. This device does not contain customer serviceable components. Refer servicing to qualified personnel.
- No naked flame sources such as lighted candles should be placed on the device.
- Unplug from the wall outlet during a storm.
- Always leave sufficient space around the device for ventilation. Do not use or place the device on soft surface such as a bed or cushion which could make the device build up heat.
- Do not handle the device roughly or subject it to falls, pressure, shock, or violent movement.

- Do not use the device while driving a car or doing any other activities in which loss of concentration could lead to potential harm to self or others.
- Due to the used enclosure material, the laptop shall only be connected to a USB interface of version 2.0 or higher. The connection to so called power USB is prohibited.
- The adapter shall be installed near the equipment and shall be easily accessible.
- When charging, please place the laptop in an environment that has a normal room temperature and good ventilation. It is recommended to charge the laptop in an environment with a temperature that ranges from 5°C~25°C. Please ensure to use only the charger offered by the manufacturer. Using unauthorized charger may cause danger and violate the authorization of the laptop and the guarantee article. The maximum operating ambient temperature of the equipment declared by the manufacturer is 40°C.
- Excessive sound pressure from earphones and headphones can cause hearing loss.

SAR statement

The SAR limit of Europe is 2.0 W/kg. Laptop has also been tested against this SAR limit. The highest SAR value reported under this standard during product certification for use at the body is 1.506 W/kg. This device was tested for typical body-worn operations with the back of the handset kept 0 cm from the body. To maintain compliance with RF exposure requirements, use accessories that maintain a 0cm separation distance between the user's body and the back of the handset. The use of belt clips, holsters and similar accessories should not contain metallic components in its assembly. The use of accessories that do not satisfy these requirements may not comply with RF exposure requirements, and should be avoided.

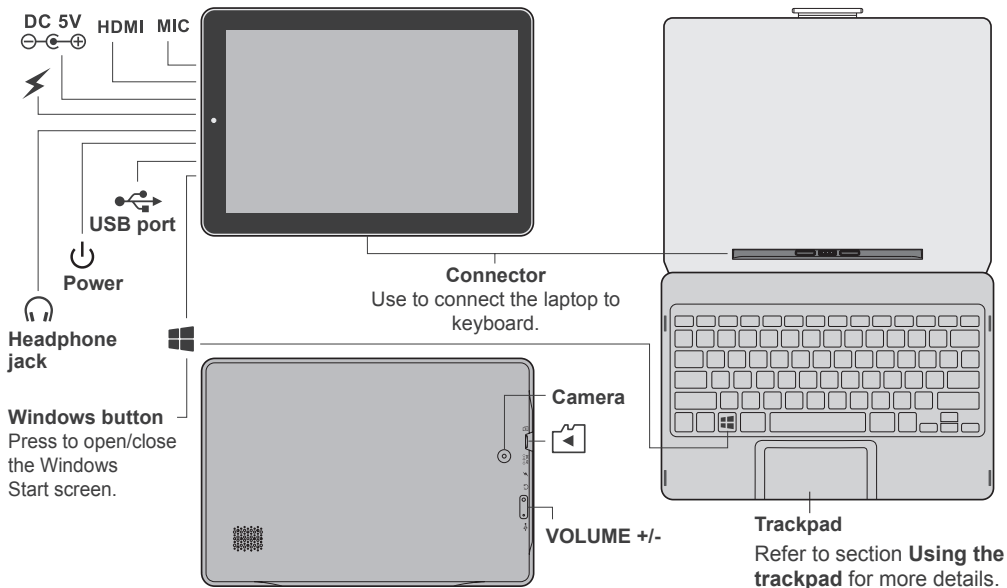
CAUTION: RISK OF EXPLOSION IF BATTERY IS REPLACED BY AN INCORRECT TYPE. DISPOSE OF USED BATTERIES ACCORDING TO THE INSTRUCTIONS.

ACCESSORY

The following accessory is included.

AC Adapter x1

GETTING TO KNOW YOUR LAPTOP



BASIC OPERATION

Turning on your laptop for the first time

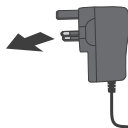


IMPORTANT! Please Read.

We recommend fully charging your laptop before using it for the first time. For optimal operation, please connect the provided AC adapter to your laptop when it falls below 20% charge.

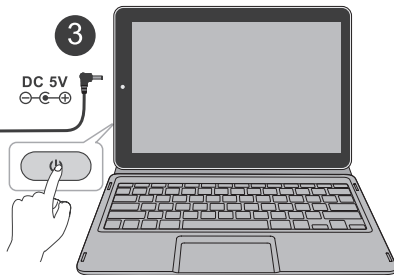
1 Be sure your home Wi-Fi network is turned on and connected to the internet.


2 To wall outlet



3

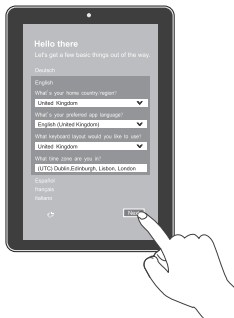
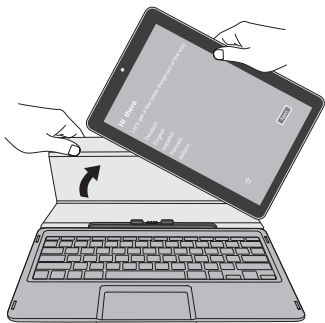
DC 5V
⊖ ⊕



4 Press the **Power**  button to turn on the unit.

Note

- You cannot switch on the unit if the battery level is less than 5%. Please charge the unit for more than 20 minutes then switch on the unit.
- The laptop battery requires about 4 hours to fully charge.



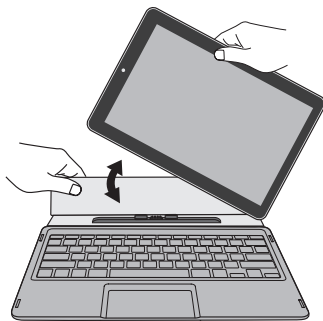
5 If the screen orientation changes to portrait format, please undock your laptop from the keyboard.

6 Select the language and region, then tap **Next** and follow the onscreen instructions to setup the laptop.

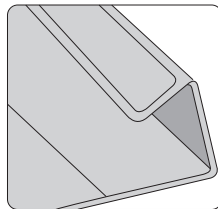
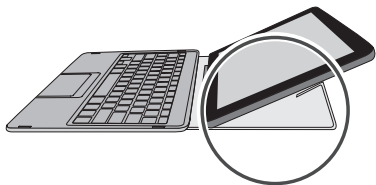
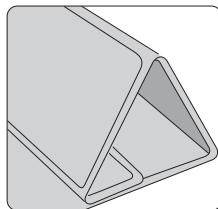
Laptop docking

The keyboard connects to the laptop via the Connector. When the connection is successful:

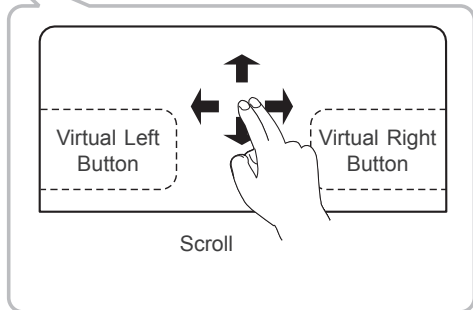
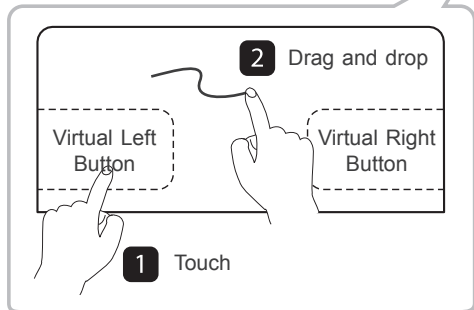
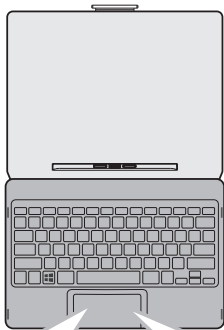
- If the laptop is in PC mode, it will automatically adjust its settings to use the keyboard.
- If the laptop is in Tablet mode, the message box "Do you want to exit tablet mode?" will display on the bottom of the screen. Choose "Yes" or "No" to proceed.




There are two ways to dock the laptop onto the Folio Keyboard.



Using the trackpad




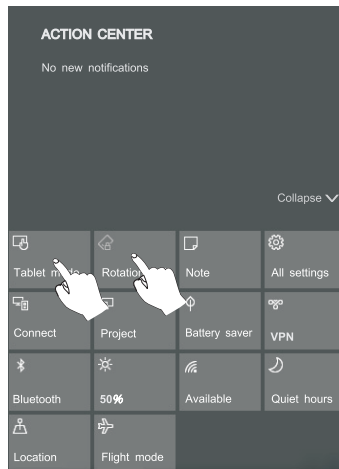
To lock / unlock the screen rotation

1. Swipe in from the right edge of the screen or tap the  icon in the lower-right corner of the screen to launch the Action Center screen.
2. Tap **Rotation lock** to turn it on/off.

Note: If the **Rotation lock** can not be set, please undock the Keyboard or remove any other accessories via the USB connection.

To switch Tablet mode on/off


1. Swipe in from the right edge of the screen or tap the  icon in the lower-right corner of the screen to launch the Action Center screen.
2. Tap **Tablet mode** to turn it on/off.



Connecting to a WiFi Network

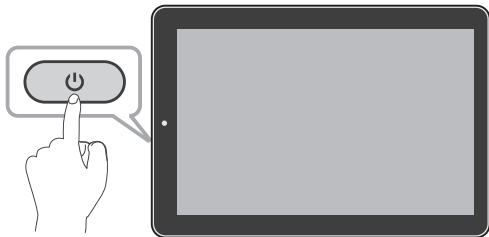
1. Go to **Settings** -> **Network & Internet** -> **WiFi**, slide it to the **On** position.
2. The device will scan WiFi networks automatically and display those available.
3. Select an access point from the list of available WiFi connections, then tap **Connect**.
4. When you are prompted for a password, enter your password and tap **Next**.

- If the device finds a network that you connected to previously, it will connect to it automatically.
- If the WiFi network does not appear in the list, it maybe a hidden network, please tap "Hidden Network" and input SSID name of network along with password for a connection.

Tip: You can touch and hold the  **WiFi** icon in Action Center screen until the **Go to Settings** appears and then tap it to enter the WiFi setting screen.

Turn on the laptop screen from standby mode

- 1** Press the **Power**  button to turn on the laptop screen.





- 2** Swipe up the lock screen from the bottom edge of the display.

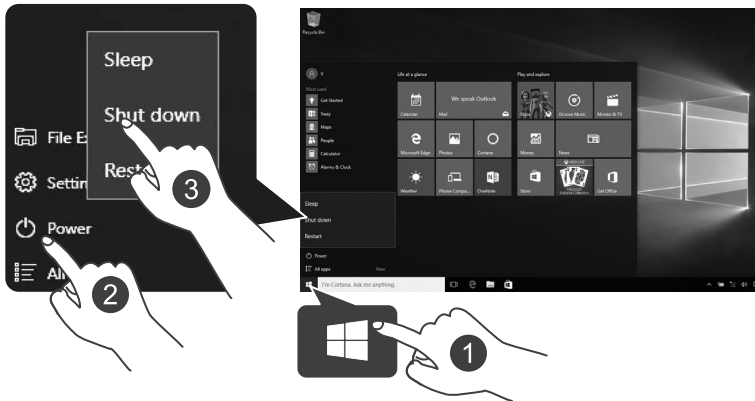


Sleep / Standby mode

Press the **Power**  button to turn off the laptop screen.

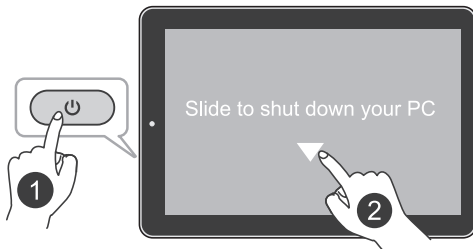
POWER OFF YOUR LAPTOP

- 1 Tap  on the screen or on your keyboard.
- 2 Tap  **Power**, it will display 3 options (Sleep, Shut down and Restart).
- 3 Select **Shut down** to power the laptop off.



OR

- 1 Press and hold the **Power** button until ▼ with the message "Slide to shut down your PC" appears.
- 2 Slide ▼ down. Your PC is now shut down.



Note

- When the lid is closed, the unit does not change to standby or sleep mode.
- Press & hold the Power button for 10 seconds to force SHUT DOWN the unit.

TROUBLE SHOOTING

The device won't start

- This may happen if your battery is empty. Please connect the provided AC adapter to a wall outlet.

Windows is not active automatically

Windows will be active automatically once you connect your laptop to a WiFi network.

- Make sure that you have a WiFi network connection.

Laptop displays network or service error message

- When you are located in places with poor signal, your laptop may lose its Wi Fi connection. Try moving closer to the WiFi router.

Touch screen response is slow or incorrect

If the laptop's touch screen response is incorrect, please try the following:

- Remove any protective film on the touch screen. The protective film may prevent the device recognition input.
- Make sure that your fingers are dry and clean before you tap the touch screen.
- Restart the laptop to clear any temporary software bugs.

Laptop is frozen or a serious error appears

- If the laptop is frozen or slow to respond, press and hold the power button for 10 seconds to force SHUT DOWN the unit, then press the power button to turn on your laptop again.

Specifications

Power: DC IN 5V (operate with AC adapter)

Card Reader: MicroSD Card Slot support max 128GB

Interface: USB 3.0 High speed

WiFi Connection: IEEE 802.11 b/g/n

LEGAL AND SAFETY NOTICES

Environmental Considerations

The crossed-out garbage can symbol on your product signifies that it falls into the category of electric/electronic equipment. Products of this type contain substances that are potentially dangerous to the environment and to human health. Therefore, you should not dispose of the Venturer electronic device in a regular trash. As such, the current European directives ask that this device be collected:

- At places of distribution in the case of a purchase of a similar electronic product.
- At locally created disposal areas (waste disposal centers, sorted trash system, etc.)



Copyright and Trademark Notices

Intel, the Intel logo and the Intel Inside logo are trademarks of Intel Corporation in the U.S. and/or other countries.

Windows and windows logo are trademarks or registered trademarks of Microsoft Corporation in the United States and/or other countries.

The *Bluetooth*[®] word mark and logos are registered trademarks owned by the *Bluetooth SIG* Inc. Other trademarks and trade names are those of their respective owners.

The Wi-Fi CERTIFIED Logo is a certification mark of the Wi-Fi Alliance.



HDMI, the HDMI logo, and High-Definition Multimedia Interface are trademarks, registered trademarks, or service marks of HDMI Licensing, LLC in the United States and/or other countries.

About HDMI

High-Definition Multimedia Interface (HDMI) is a high-speed digital interface that can transmit uncompressed high definition video and digital multichannel audio. It delivers high quality picture and sound quality. HDMI is fully backward compatible with DVI. As required by the HDMI standard, connecting to HDMI or DVI products without HDCP (High bandwidth Digital Content Protection) will result in no Video or Audio output.

All other trademark appearing herein are the property of their respective owners. Specifications subject to change without notice.

For a more detailed User manual please scan the below QR code



Limited Warranty

ALCO INTERNATIONAL LTD makes following limited warranty. This limited warranty extends only to the original consumer purchaser and is limited to non-commercial use of the product.

VENTURER products are warranted to be free from defects in materials or workmanship for a period of one year from the date of their original retail purchase. If the unit fails to conform this warranty, we will service the product using new or refurbished parts and products at VENTURER's sole discretion.

**TECHNICAL HELP ON THE OPERATION OF THIS PRODUCT IS AVAILABLE
IF THIS UNIT FAILS TO CONFIRM TO THIS WARRANTY**

PLEASE CALL 03453073611

MONDAY TO FRIDAY 9AM TO 5PM

Website: www.venturer.com