



**RCT6A03W13F1**

**Gemini 10 Pro**

# **Quick Start Guide**

# IMPORTANT SAFETY INSTRUCTIONS

Some of the following information may not apply to your particular product; however, as with any electronic product, precautions should be observed during handling and use.

- Read these instructions.
- Keep these instructions.
- Heed all warnings.
- Follow all instructions.
- Do not use this apparatus near water.
- Clean only with dry cloth.
- Do not block any ventilation openings. Install in accordance with the manufacturer's instructions.
- Do not install near any heat sources such as radiators, heat registers, stoves, or other apparatus (including amplifiers) that produce heat.
- Protect the power cord from being walked on or pinched particularly at plugs, convenience receptacles, and the point where they exit from the apparatus.
- Only use attachments / accessories specified by the manufacturer.
- Unplug this apparatus during lightning storms or when unused for long periods of time.
- Refer all servicing to qualified service personnel. Servicing is required when the apparatus has been damaged in any way, such as power-supply cord or plug is damaged, liquid has been spilled or objects have fallen into the apparatus, the apparatus has been exposed to rain or moisture, does not operate normally, or has been dropped.

## **ADDITIONAL SAFETY INFORMATION**

- The AC adaptor and apparatus shall not be exposed to dripping or splashing and no objects filled with liquids, such as vases, shall be placed on the apparatus.
- Always leave sufficient space around the product for ventilation. Do not place product in or on a bed, rug, in a bookcase or cabinet that may prevent air flow through vent openings.

- Do not place lighted candles, cigarettes, cigars, etc. on the product.
- Care should be taken so that objects do not fall into the product.
- Do not attempt to disassemble the cabinet. This product does not contain customer serviceable components.
- To prevent the risk of fire or electric shock, do not expose this apparatus to rain or moisture.
- Do not play your headset at high volume. Hearing experts warn against extended high-volume play.

### **SAR statement**

The SAR limit of Europe is 2.0 W/kg. Laptop has also been tested against this SAR limit. The highest SAR value reported under this standard during product certification for use at the body is 1.506 W/kg. This device was tested for typical body-worn operations with the back of the handset kept 0 cm from the body. To maintain compliance with RF exposure requirements, use accessories that maintain a 0cm separation distance between the user's body and the back of the handset. The use of belt clips, holsters and similar accessories should not contain metallic components in its assembly. The use of accessories that do not satisfy these requirements may not comply with RF exposure requirements, and should be avoided.

**CAUTION: RISK OF EXPLOSION IF BATTERY IS REPLACED BY AN INCORRECT TYPE. DISPOSE OF USED BATTERIES ACCORDING TO THE INSTRUCTIONS.**

### **Environmental Considerations**

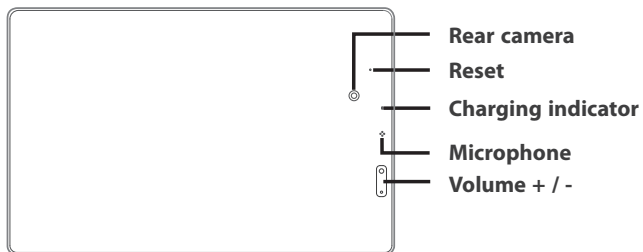
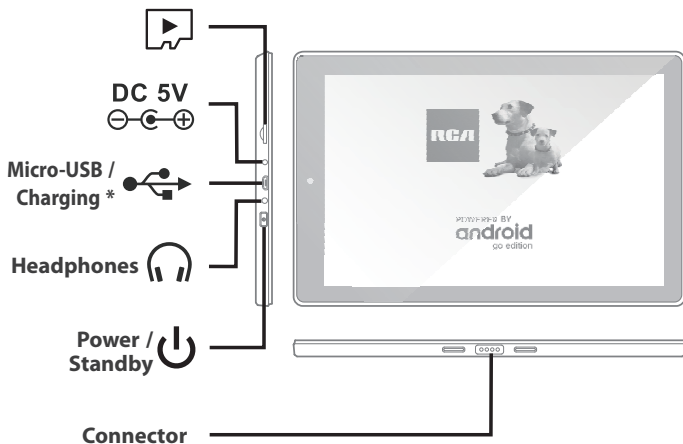
The crossed-out garbage can symbol on your product signifies that it falls into the category of electric/electronic equipment. Products of this type contain substances that are potentially dangerous to the environment and to human health. Therefore, you should not dispose of the Venturer electronic device in a regular trash. As such, the current European directives ask that this device be collected:

- At places of distribution in the case of a purchase of a similar electronic product.
- At locally created disposal areas (waste disposal centers, sorted trash system, etc.)



## Getting to know your tablet

---



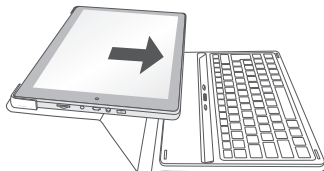
## Tablet docking / undocking

---

### Docking



### Undocking



### NOTE

The keyboard connects to the tablet via the Connector. When the connection is successful, the tablet will automatically adjust its settings to use the keyboard.

## Charging your tablet

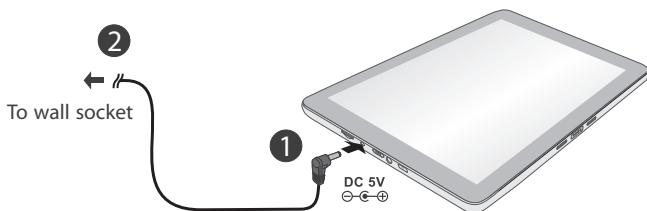
Before turning on your tablet for the first time, connect the supplied AC adaptor into the tablet's DC 5V port and to a nearby wall socket to activate the battery.

\* Micro USB port for charging at either OFF mode or Standby mode.



### IMPORTANT! Please Read.

We recommend fully charging your tablet before using it for the first time. For optimum performance, please connect the provided AC adaptor to your tablet when it falls below 20% charge.



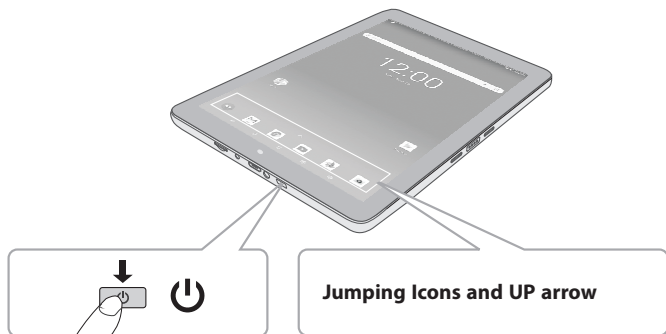
Charging time will vary depending on remaining battery level. Charging from 0%, should take approximately 4-5 hours. Use ONLY the included AC adaptor. You may not be able to turn on your tablet for at least 20 minutes if the battery was fully drained.

## Turning on your tablet for the first time

---

When using the tablet for the first time, you will be required to setup the following:

1. Press and hold the **Power** button **4~5 seconds** to turn on the tablet.
2. Select the language, then tap **START** .
3. Set the Wi-Fi.
4. Follow the onscreen instructions to setup the tablet.

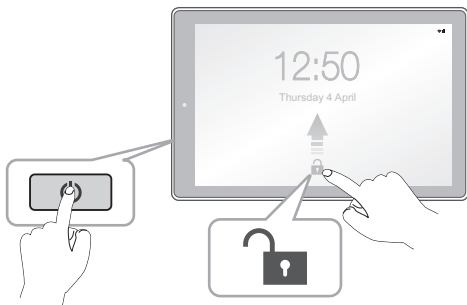


5. The Jumping Icons will remind you to pull up the ALL APPS menu.
6. Tap the UP arrow or swipe up from the bottom of the screen to enter the ALL APPS menu.

## Turning on your tablet screen from standby mode

---

- 1 Press the **Power** button to turn on the tablet screen.
- 2 Swipe up to unlock the screen.




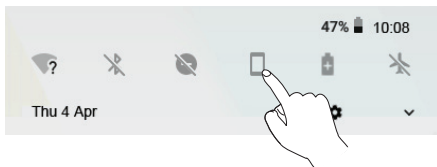
### Sleep / Standby mode

Press the **Power** button to turn off the tablet screen.

## Setting the Auto-rotate screen

---

1. Swipe down from the top edge of screen to launch the "**Quick Settings**".
2. Touch the icon " " to turn on the **Auto-rotate screen**.



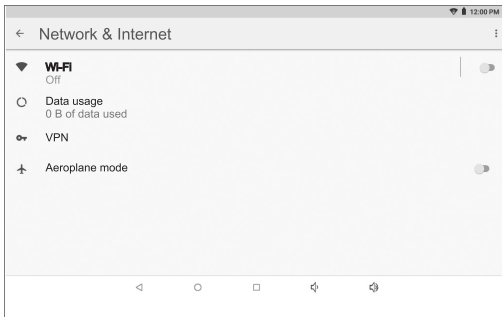
**Tip:** You can also go to **Settings** -> **Accessibility** -> **Auto-rotate screen** and turn it on.



## Connecting to a WiFi network

---


1. Go to **Settings** -> **Network & Internet**, tap **Wi-Fi** to open the Wi-Fi screen and then tap **Off** to turn it on.



2. The device will scan Wi-Fi networks automatically and display the available names.
  - **If the device finds a network that you connected to previously, it will connect to it automatically.**
3. Tap a network name to connect to it, and enter a password if necessary.
4. Alternatively, if your Wi-Fi router supports Wi-Fi Protected Setup, you can go to the Advanced Wi-Fi screen (tap **Wi-Fi preferences** and select **Advanced**) and select **WPS Push Button**, then press the WPS button on your router.
5. If your network does not broadcast its SSID, tap + **Add network** and enter the Network SSID (name) of the network. If necessary, enter security or other network configuration details.

## Power off your tablet

---

- 1 Press and hold the  **Power** button until **Power off** appears and tap it.
- 2 The tablet will be completely powered off.



## Specification

---

**Power:** DC IN 5V (operate with AC adaptor)

## Copyright and trademark notices

---

Google, Android, Google Play, YouTube and other marks are trademarks of Google LLC.

The Wi-Fi CERTIFIED Logo is a certification mark of the Wi-Fi Alliance. The Wi-Fi Protected Setup Mark is a mark of the Wi-Fi Alliance.

The *Bluetooth*® word mark and logos are registered trademarks owned by the *Bluetooth* SIG Inc. Other trademarks and trade names are those of their respective owners.

All other trademark appearing herein are the property of their respective owners. Specifications subject to change without notice.

## Limited Warranty

**ALCO INTERNATIONAL LTD** makes following limited warranty. This limited warranty extends only to the original consumer purchaser and is limited to non-commercial use of the product.

**VENTURER** products are warranted to be free from defects in materials or workmanship for a period of one year from the date of their original retail purchase. If the unit fails to conform this warranty, we will service the product using new or refurbished parts and products at Venturer's sole discretion.

**TECHNICAL HELP ON THE OPERATION OF THIS PRODUCT IS AVAILABLE  
IF THIS UNIT FALLS TO CONFORM TO THIS WARRANTY  
PLEASE CALL 0345 3073611 (FOR UK ONLY)**

**MONDAY TO FRIDAY 9AM TO 5PM**

**Email address: [support@venturer.eu](mailto:support@venturer.eu)**

**Website: [www.venturer.com](http://www.venturer.com)**

Printed in China



811-9A0391W030